



## Common Data Elements: A Healthy People Perspective

### Session: The Value of Common Data Elements

**Allan Uribe, DrPH, MPH, CPH ([qsj2@cdc.gov](mailto:qsj2@cdc.gov))**

Health Statistician

Health Promotion Statistics Branch

March 6, 2024

# Outline

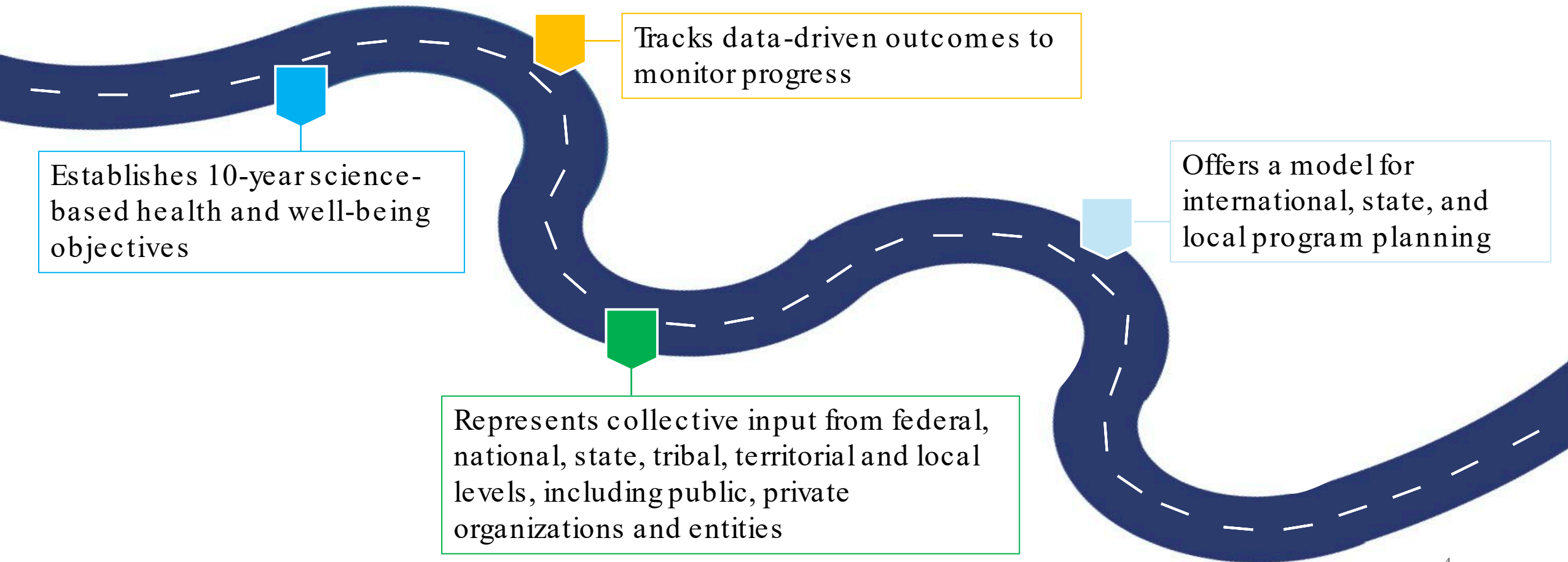
- Healthy People Background
- Definition of SDOH in Healthy People
- Value of using a standard data template

Background

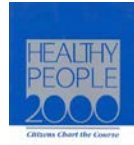


# What is Healthy People?

Roadmap to improve health, eliminate disparities and achieve health equity



# Evolution of Healthy People—Overarching Goals



1990\*

2000\*

2010\*

2020\*

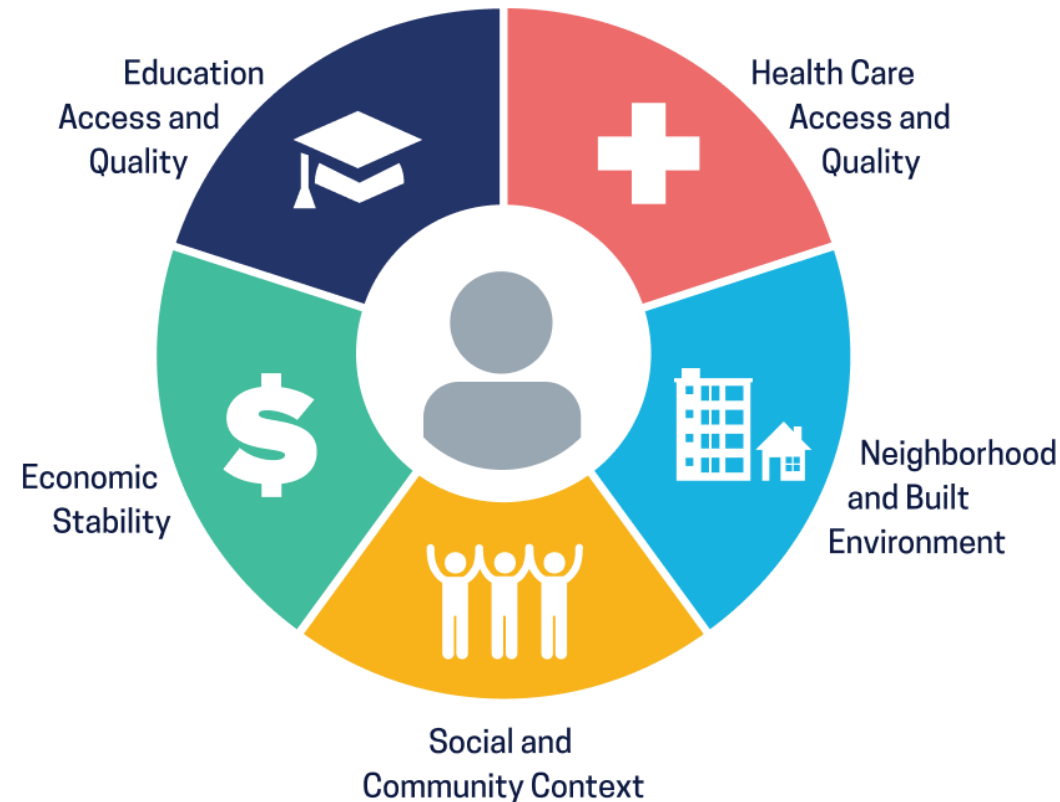
2030\*

- |  |  |  |  |   |
|--|--|--|--|---|
| <ul style="list-style-type: none"> <li>• Decrease mortality: infants—adults</li> <li>• Increase independence among older adults</li> </ul> | <ul style="list-style-type: none"> <li>• Increase span of healthy life</li> <li>• Reduce health disparities</li> <li>• <b>Achieve access to preventive services for all</b></li> </ul> | <ul style="list-style-type: none"> <li>• Increase quality and years of healthy life</li> <li>• Eliminate health disparities</li> </ul> | <ul style="list-style-type: none"> <li>• Attain high-quality, longer lives free of preventable disease</li> <li>• Achieve health equity; eliminate disparities</li> <li>• <b>Create social and physical environments that promote good health</b></li> <li>• Promote quality of life, healthy development, healthy behaviors across life stages</li> </ul> | <ul style="list-style-type: none"> <li>• Attain healthy, thriving lives and well-being free of preventable disease, disability, injury, and premature death</li> <li>• Eliminate health disparities, achieve health equity, and attain health literacy to improve the health and well-being of all</li> <li>• <b>Create social, physical, and economic environments that promote attaining the full potential for health and well-being for all</b></li> <li>• Promote healthy development, healthy behaviors, and well-being across all life stages</li> <li>• Engage leadership, key constituents, and the public across multiple sectors to take action and design policies that improve the health and well-being of all</li> </ul> |
|--|--|--|--|---|

\*Target year

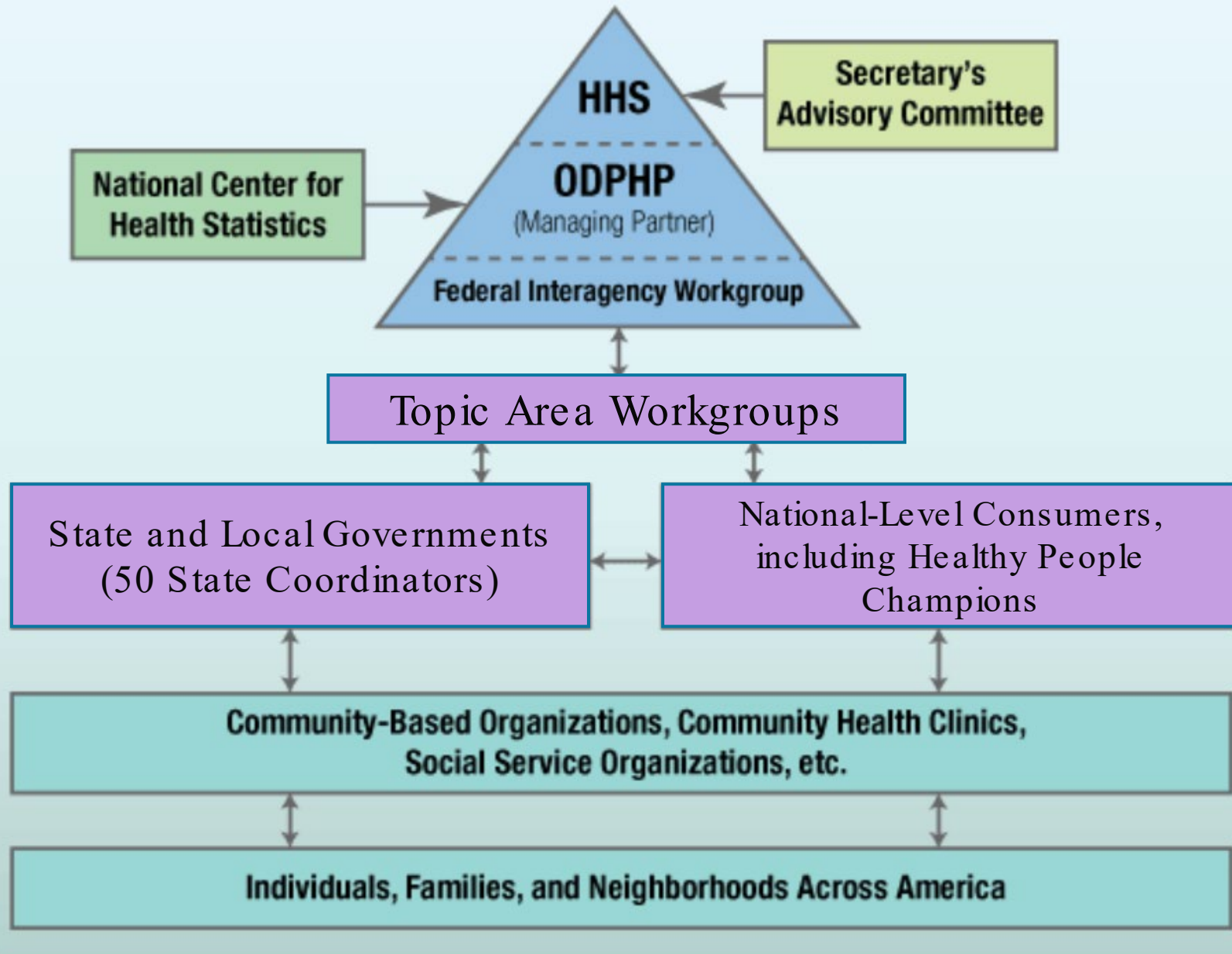
# Healthy People 2030 Social Determinants of Health Framework

**Social determinants of health (SDOH)** are the conditions in the environments where people are born, live, learn, work, play, worship, and age that affect a wide range of health, functioning, and quality-of-life outcomes and risks.



Healthy People 2030 SDOH Framework: <https://health.gov/healthypeople/objectives-and-data/social-determinants-health>

# Healthy People Stakeholders



# Role of NCHS in Healthy People

- Statistical methods and measure development
- Healthy People databases
- Analysis and presentation of data
- Expertise and technical assistance





# Value of Using a Standard Data Template



# Sample HP2010 Data Template

## Total

## Gender

Male  
Female

## Race/Ethnicity

American Indian or Alaska Native only  
Asian or Pacific Islander  
    Asian  
    Native Hawaiian and other pacific islander  
Black or African American  
White

Hispanic or Latino  
Not Hispanic or Latino  
    Black or African American  
    White

## Educational Attainment

< High school  
High school  
(At least) Some college

## Family income

Poor  
Near poor  
Middle/high-income

## Disability status

People with disabilities or activity limitations  
People without disabilities or activity limitations

## Geographic location

Urban  
Rural

## Health insurance status (<65 years)

Insured  
    Private  
    Public  
        Medicare  
        Medicaid  
Uninsured

## Select Populations

Age groups  
School levels  
Persons with select medical conditions  
Sexual orientation

# Sample HP2020 Data Template

## Total

### Sex

- Male
- Female

### Race/Ethnicity

- American Indian or Alaska Native only
- Asian only
- Native Hawaiian or Other Pacific Islander only
- Black or African American only
- White only
- 2 or more races
- Hispanic or Latino
- Not Hispanic or Latino
- Black or African American only, not Hispanic or Latino
- White only, not Hispanic or Latino

### Age Group

- <18 years
  - 0-4 years
  - 5-11 years
  - 12-17 years
- 18-44 years
  - 18-24 years
  - 25-44 years
- 45-64 years
  - 45-54 years
  - 55-64 years

### Age Group (continued)

- 65 years and over
  - 65-74 years
  - 75-84 years
  - 85 years and over

### Educational Attainment (25 years and over)

- < High school
- High school
- Some college
- Associates degree
- 4-year college degree
- Advanced degree

### Family income (percent poverty threshold)

- <100
- 100-199
- 200-399
- 400-599
- 600+

### Family type

- Single
- Single parent with children
- Married couple or partners
- Two parent family with children
- Other

### Country of birth

- US
- Outside US

### Disability status (18 years and over)

- People with disabilities
- People without disabilities

### Geographic location

- Metropolitan
- Non-metropolitan

### Health insurance status (<65 years)

- Insured
  - Private
  - Public
- Uninsured

### Sexual orientation

- Straight
  - Straight, Male
  - Straight, Female
- Gay/Lesbian
  - Gay, Male
  - Gay/Lesbian, Female
- Bisexual
  - Bisexual, Male
  - Bisexual, Female

### Marital status (18 years and over)

- Married
- Cohabiting partner
- Divorced or separated
- Widowed
- Never married

# Standard HP2030 Data Template

## Total

### Sex

- Male
- Female

### Race/Ethnicity

- American Indian/Alaska Native only
- Asian only
- Native Hawaiian/Pacific Islander only
- Black or African American only
- White only
- 2 or more races
- Hispanic or Latino
- Not Hispanic or Latino
  - American Indian/Alaska Native only, not Hispanic or Latino
  - Asian only, not Hispanic or Latino
  - Native Hawaiian/Pacific Islander only, not Hispanic or Latino
  - Black only, not Hispanic or Latino
  - White only, not Hispanic or Latino
  - 2 or more races not Hispanic or Latino

### Age

[Standard groups by data system]

## Educational Attainment

- < High school
- High school
- Some college or Associates degree
- 4-year college degree or more

## Family Income (percent poverty threshold)

- <100
- 100-199
- 200-399
- >=400

## Health Insurance Status

- Insured
  - Private
  - Public

- Uninsured

## Geographic Location or Region

- Metropolitan
- Nonmetropolitan

## Marital Status

- Married/Cohabiting partner
- Divorced or Separated/Widowed
- Never married

## Country of Birth

- US
- Outside US

## Veteran Status

- Veteran
- Non-Veteran

## Disability Status

- People with disabilities
- People without disabilities

## Sexual Orientation

- Straight
  - Straight, Male
  - Straight, Female
- Gay/Lesbian
  - Gay, Male
  - Gay/Lesbian, Female
- Bisexual
  - Bisexual, Male
  - Bisexual, Female

## Gender Identity

[Standard groups by data system]

### Notes:

- If data are not collected, analyzed, or available (or need to be suppressed) for a particular demographic group by a data source, the demographic label will still be shown and a symbol or acronym will be displayed to indicate the reason data are not shown.
- With justification by the workgroup and approval by NCHS, additional population categories and subcategories may be included on a case-by-case basis.

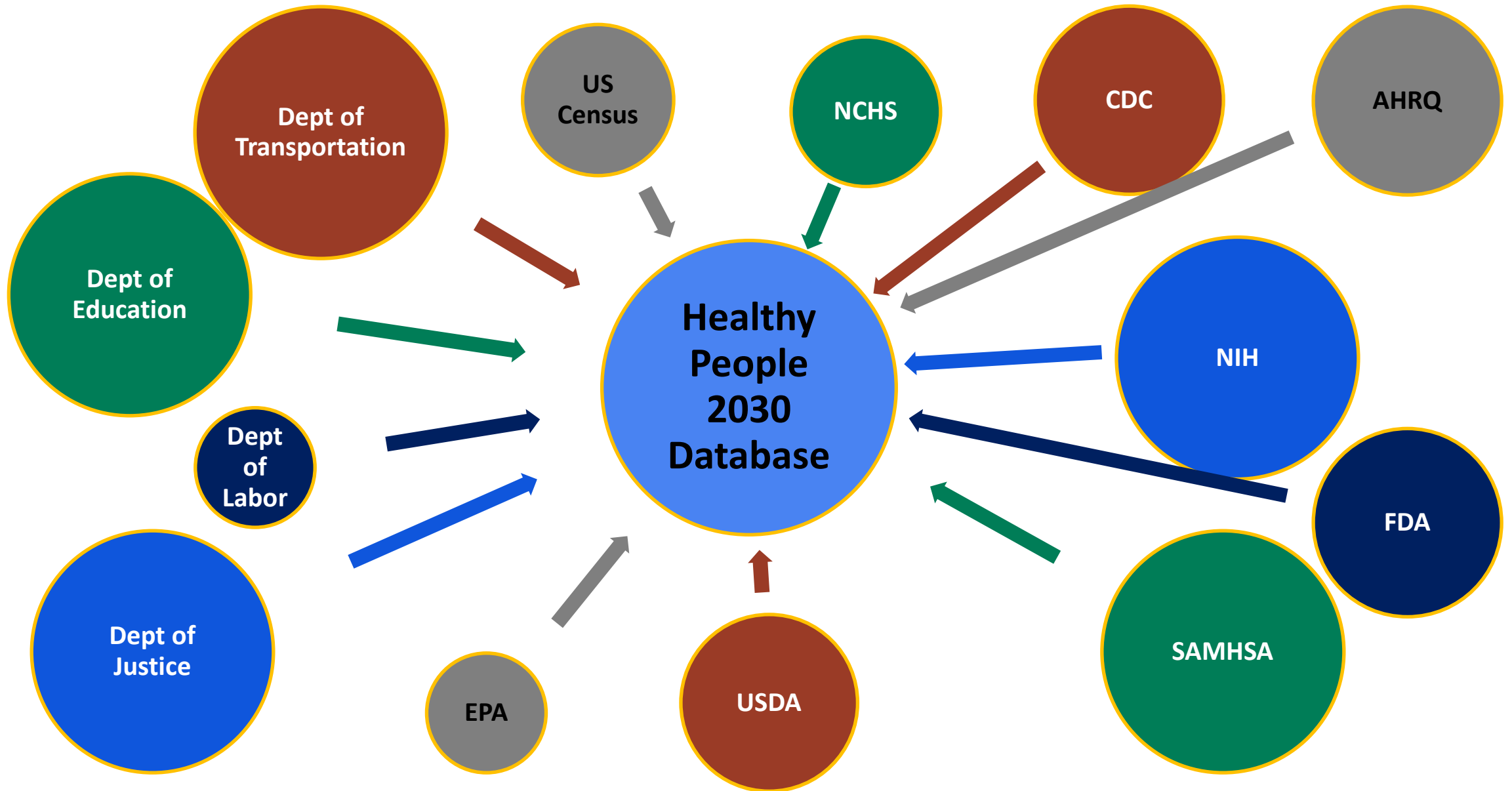
# Challenges of Using a Standard Data Template



# Challenges

- Data not available
  - Data statistically unreliable
  - Data not analyzed
  - Data not collected
- Variables are still being developed, and standards work is ongoing (e.g.)
  - Sexual Orientation
  - Gender Identity
  - Disability
  - Race/Ethnicity

# Where do Healthy People data come from?



# Next Steps and Takeaways

- The Healthy People data template has evolved each decade.
- Incorporating a data template in Healthy People has been a challenge but has provided an opportunity to highlight the benefits of common data elements.
- Standards work is ongoing and will continue to evolve in the future.



# Thank You!

<b>HPSB Staff</b>		<b>HPSB Contractors</b>
Johanna Alfier	Deepthi Kandi	Rashid Aminou
Jonathan Aram	Mark Montgomery	Makram Talih
Lesley Dobrzynski	Cheryl Rose	
Robert Francis	Asel Ryskulova	
Leda Gurley	Rashmi Tandon	
LaJeana Hawkins	Ritu Tuteja	
Kimberly Hurvitz	Jean Williams	
Elizabeth Jackson	David Huang (Chief)	
Sibeso Joyner		