



ADVANCING SEXUAL & GENDER MINORITY HEALTH RESEARCH AT NIH & BEYOND

Karen L. Parker, PhD, MSW (she | her)

Director, Sexual & Gender Minority Research Office

Division of Program Coordination, Planning, and Strategic Initiatives

Office of the Director

National Institutes of Health

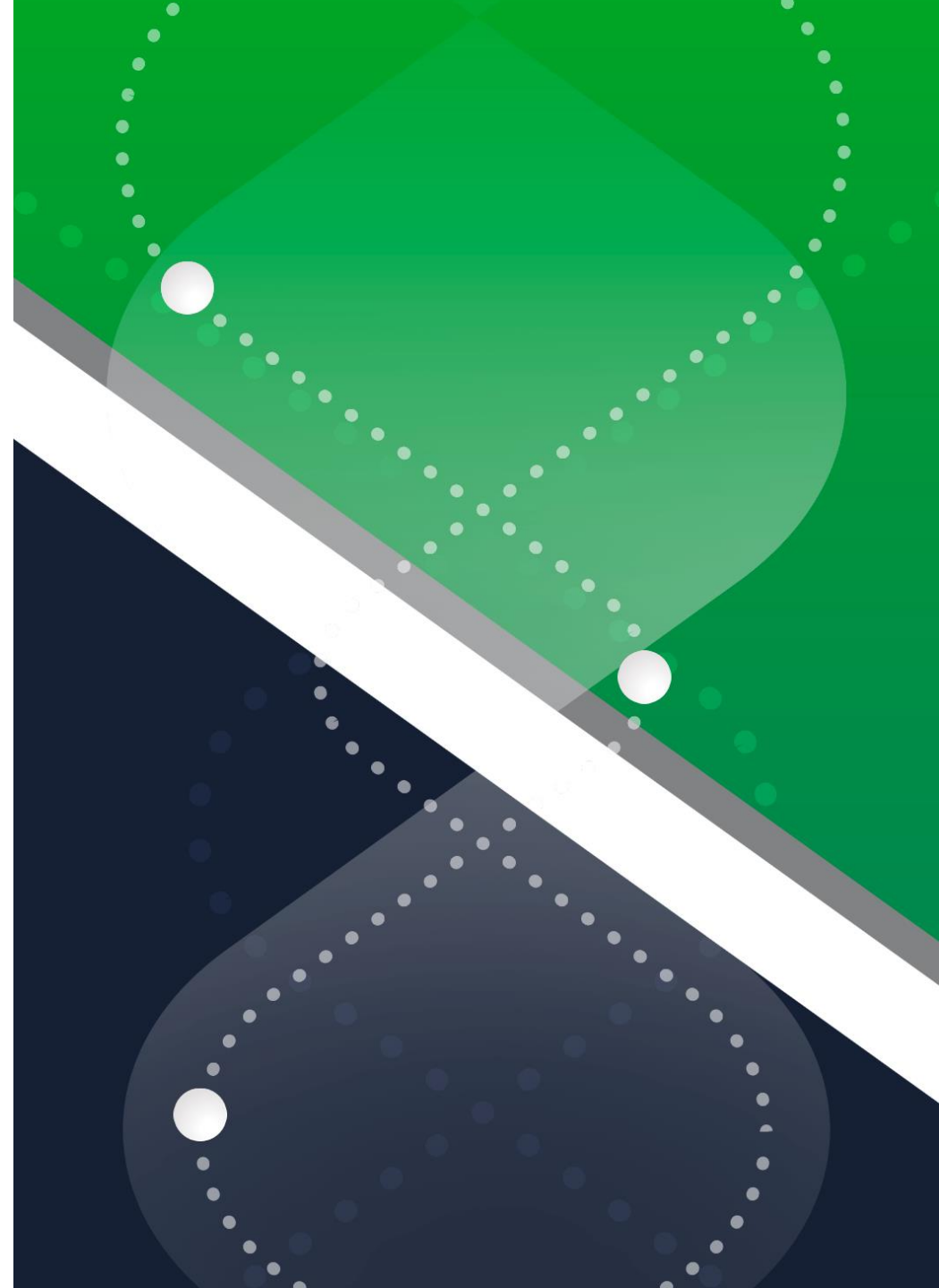
April 9, 2024

Overview of Presentation

- Sexual & Gender Minority Research Office
- NIH SGM Research Strategic Plan
- NIH SGM Grants Portfolio FY 2022
- Key Challenges & Opportunities



SEXUAL & GENDER MINORITY RESEARCH OFFICE



SGMRO – Who We Are & What We Do

- **Coordinate** sexual and gender minority (SGM) health research activities across NIH
- **Serve** as a resource about and **provide** technical assistance on SGM-related research activities, including measurement and data collection, for the extramural and NIH communities
- **Collaborate** with and **support** the NIH Institutes, Centers, and Offices to develop initiatives to expand SGM health research and support the SGM health research workforce

SGMRO does not have grant-making authority

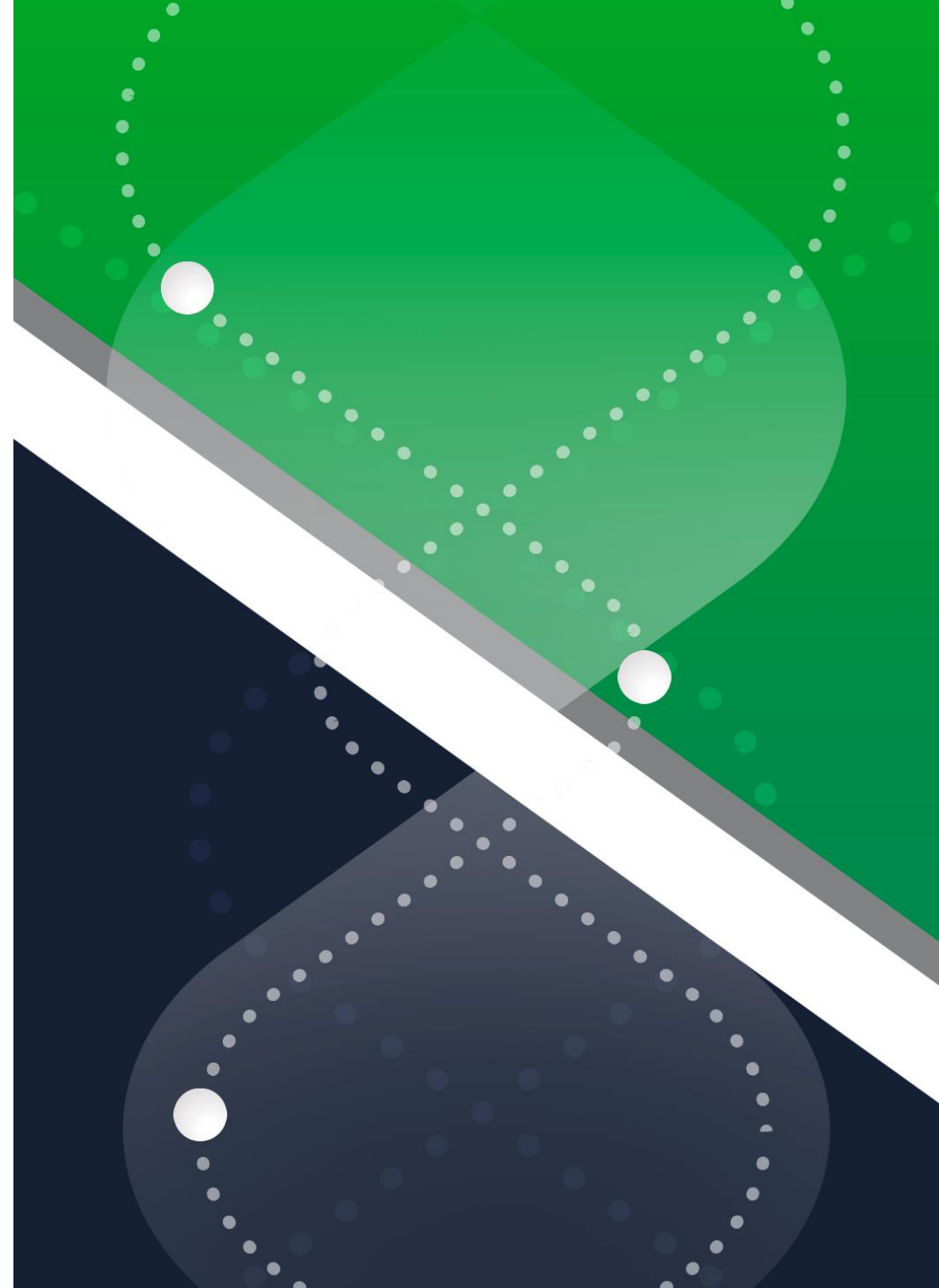


How We Accomplish Our Goals

- NIH Sexual & Gender Minority **Research Coordinating Committee (RCC)**
- Sexual & Gender Minority **Research Working Group (RWG)** of the NIH Council of Councils
- **Cross-Agency Collaboration**



SEXUAL & GENDER MINORITY RESEARCH STRATEGIC PLAN



Operational Strategic Goal Areas



Operational Goal 1: Advance rigorous research on the health of SGM populations in both the extramural and intramural research communities



Operational Goal 2: Expand SGM health research by fostering partnerships and collaborations with a strategic array of internal and external stakeholders

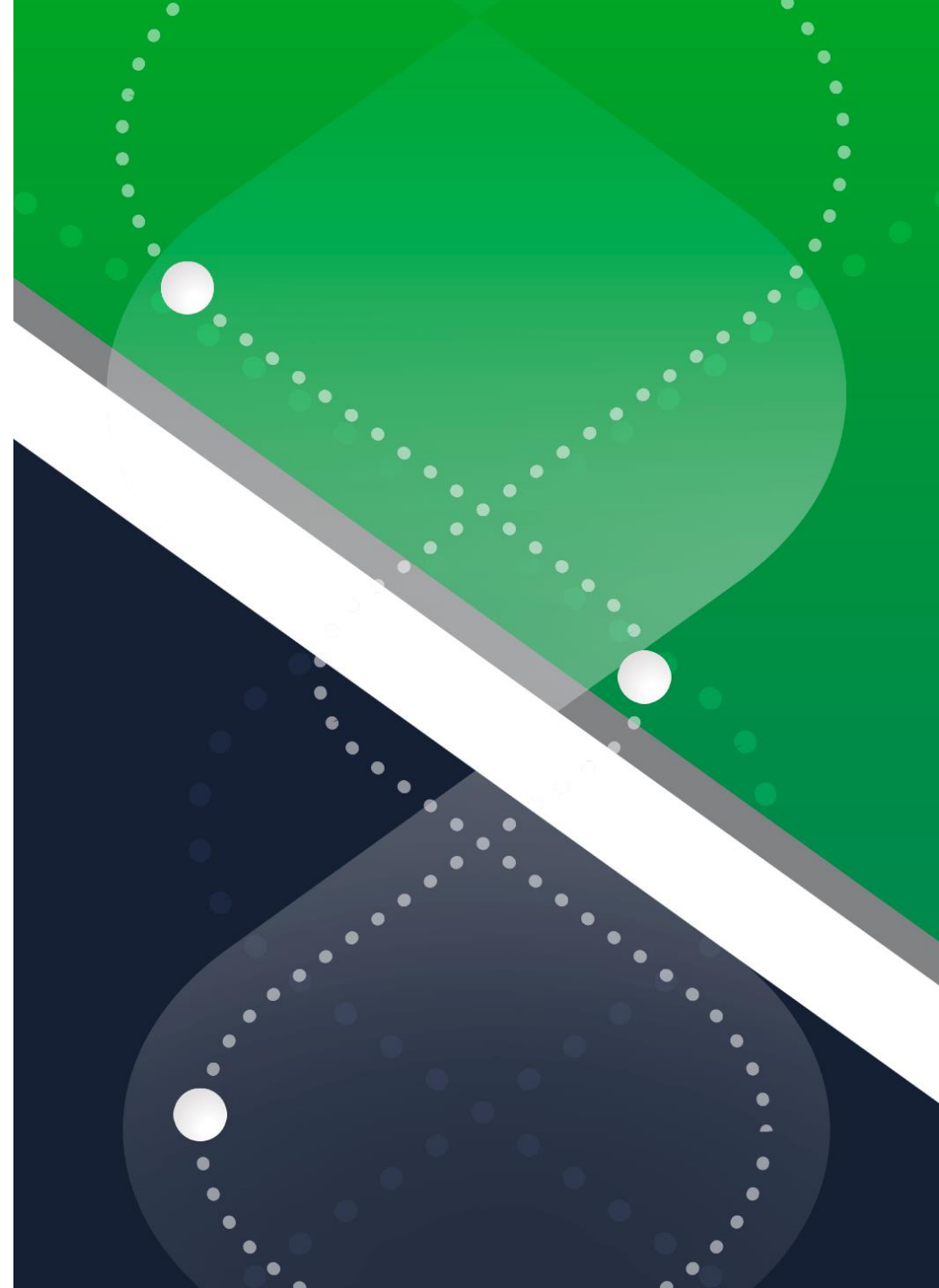


Operational Goal 3: Foster a highly skilled and diverse workforce in SGM health research



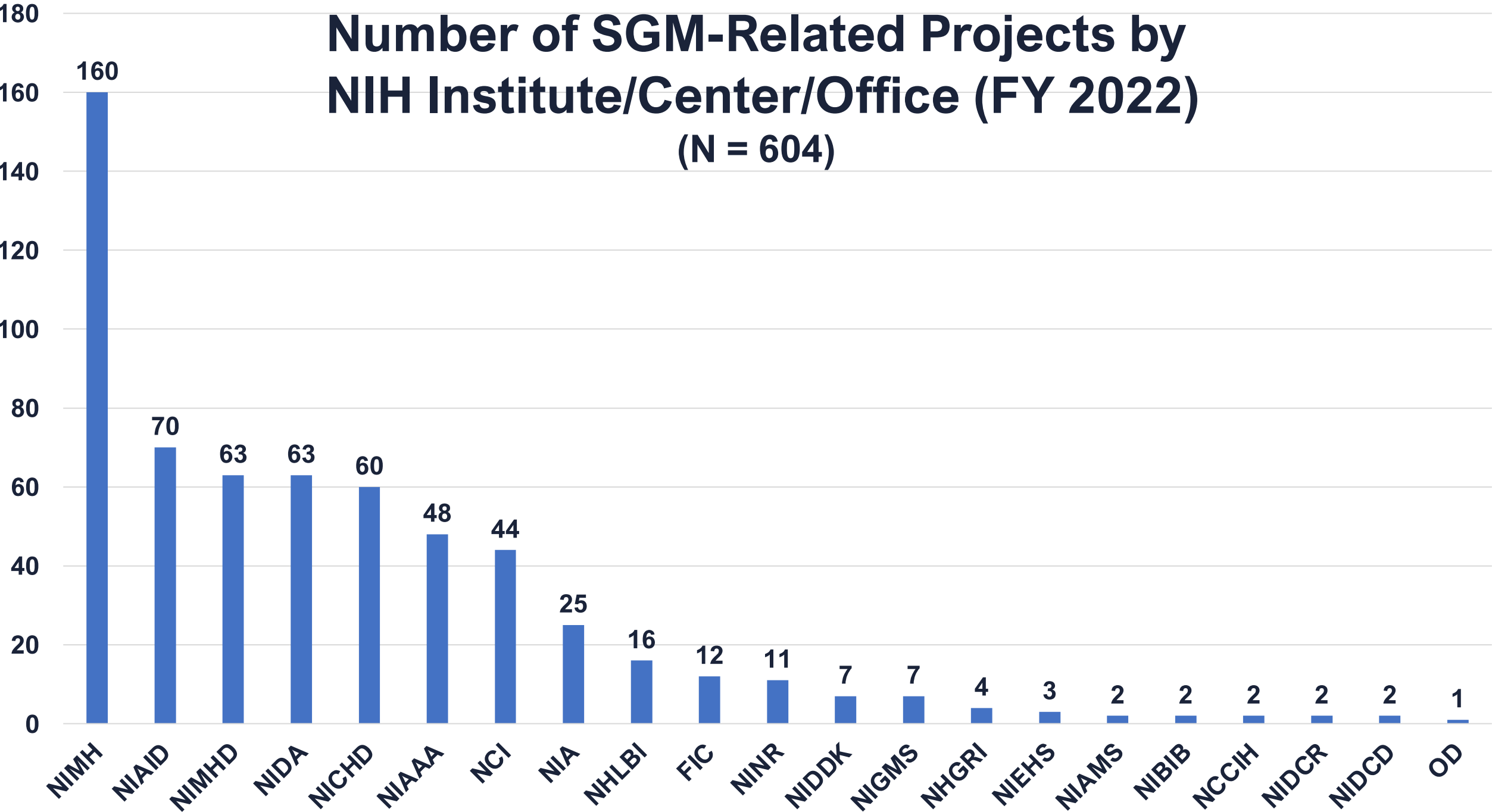
Operational Goal 4: Encourage data collection related to SGM populations in research and the health research workforce

NIH SGM GRANTS PORTFOLIO FY 2022



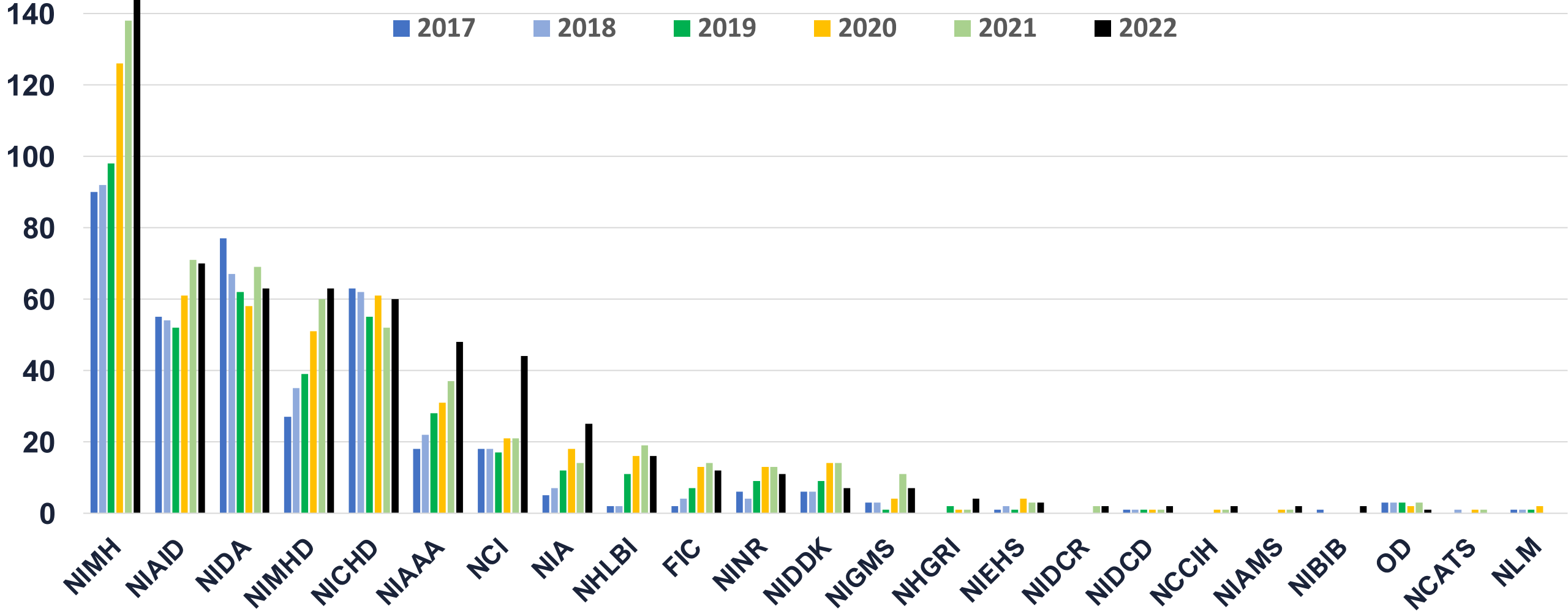
Number of SGM-Related Projects by NIH Institute/Center/Office (FY 2022)

(N = 604)



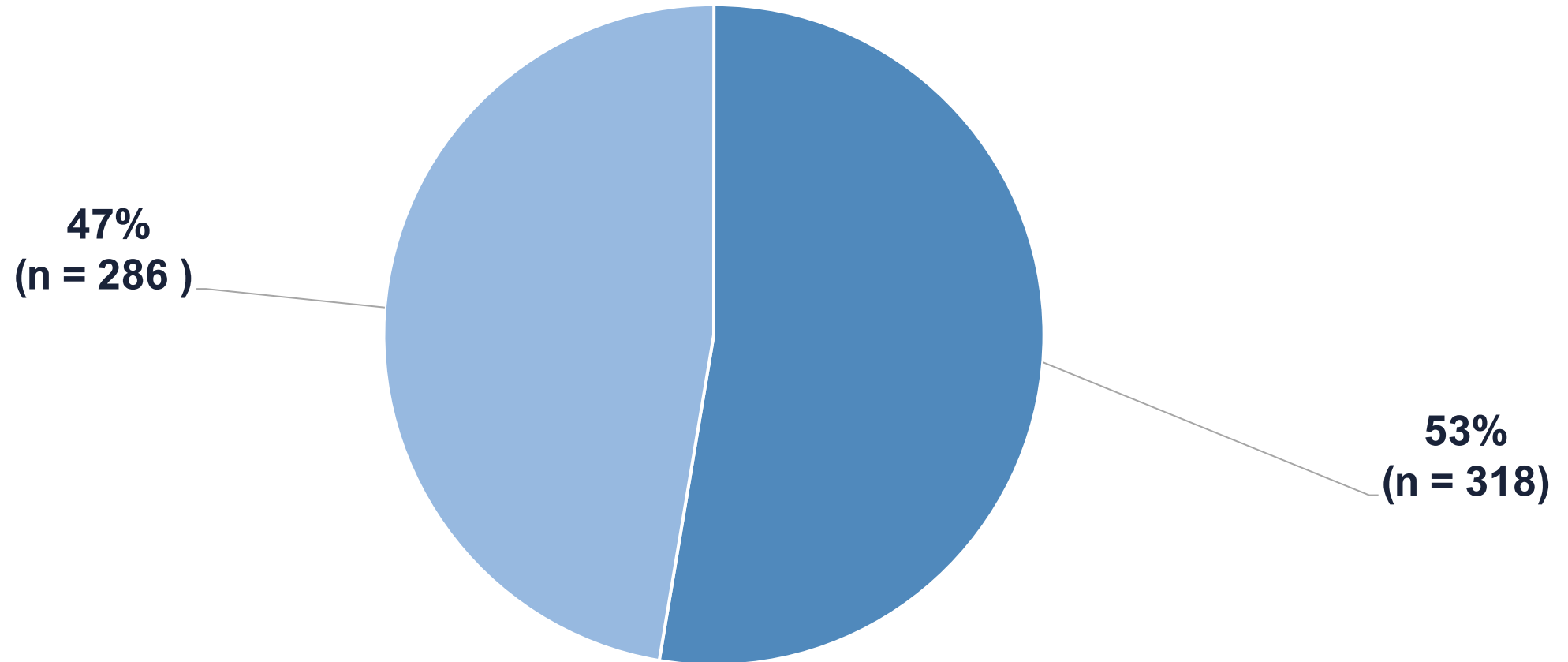
Number of SGM-Related Projects by NIH Institute/Center/Office

(FY 2017 N = 379, FY 2018 N = 384, FY 2019 N = 408, FY 2020 N = 502, FY 2021 N = 546, FY 2022 N = 604)



Comparison of Non-HIV/AIDS and HIV/AIDS Related SGM-Related Projects (FY 2022)

(N = 604)

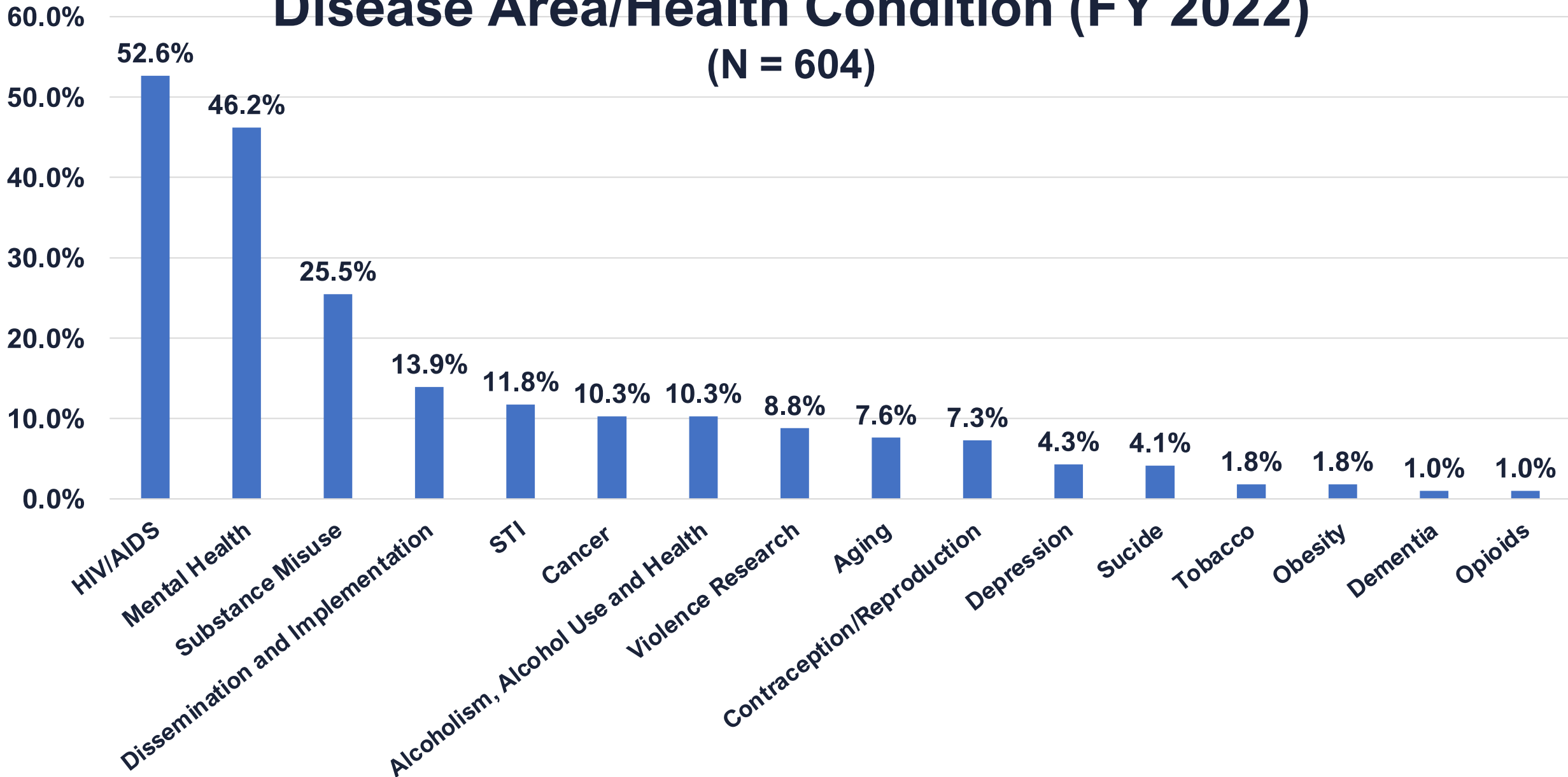


■ HIV/AIDS Projects

■ Non HIV/AIDS Projects

Proportion of SGM Projects by Disease Area/Health Condition (FY 2022)

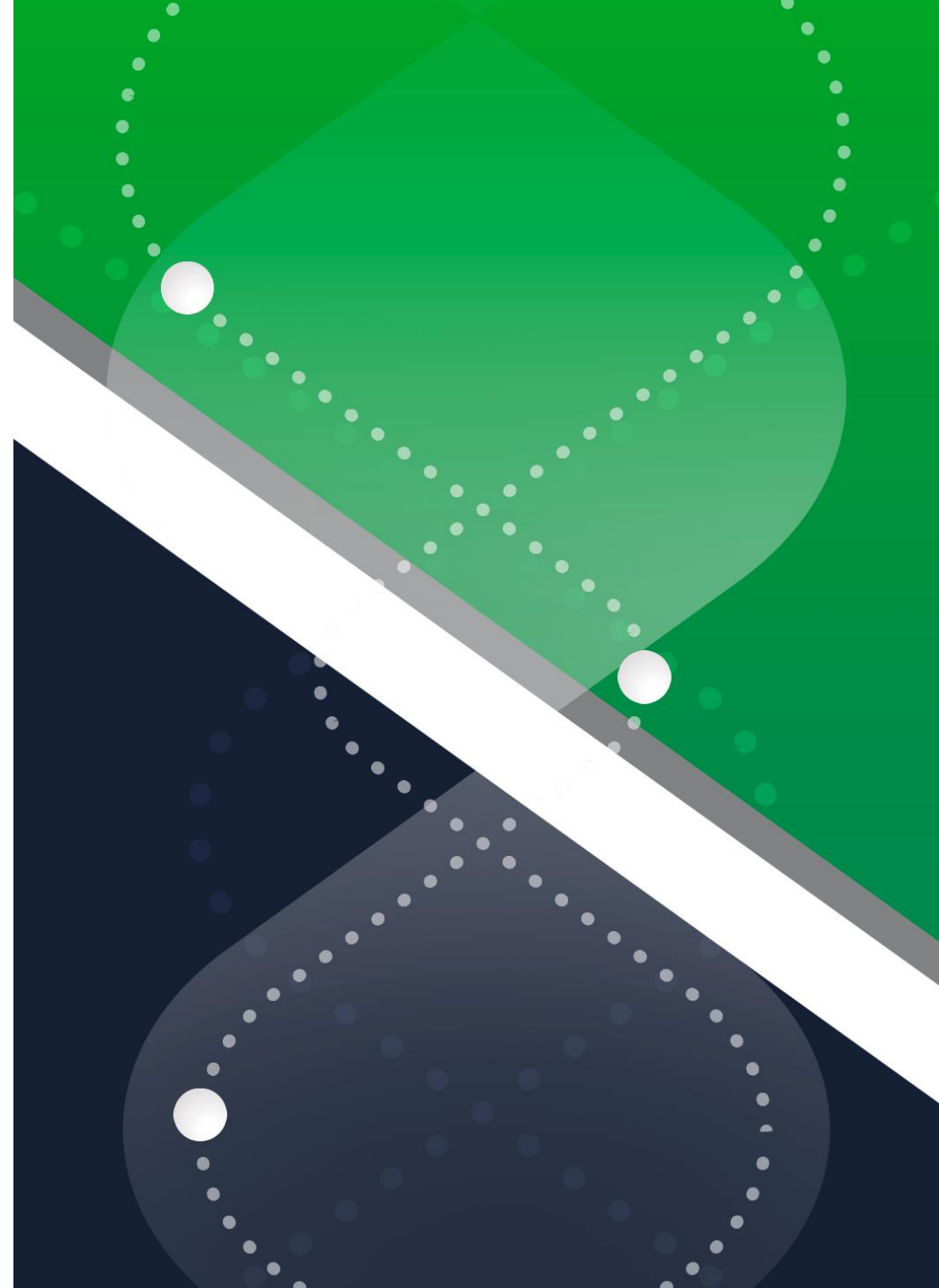
(N = 604)



FY 2022 Portfolio Analysis Key Takeaways

- 100.6% increase in the number of funded SGM-related projects from FY 2015 to FY 2022
- 171.4% increase in the number of SGM-related training and career-related awards from FY 2015 to FY 2022
- 253.1% increase in the number of non-HIV/AIDS funded SGM-related projects from FY 2015 to FY 2022
- 21 NIH ICOs funded SGM health-related research in FY 2022

CHALLENGES & OPPORTUNITIES

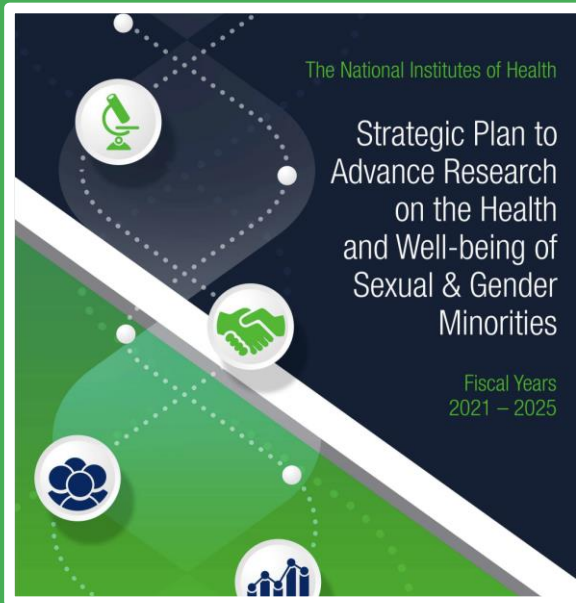
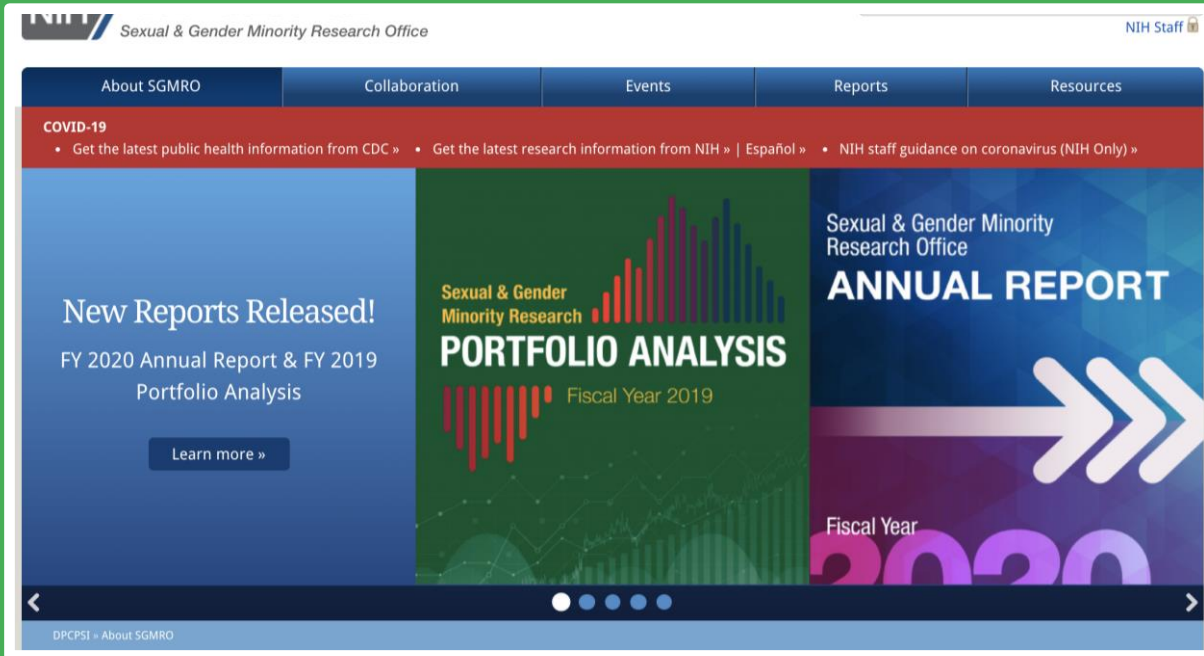


Current Challenges

- **Dearth of Research that Focuses Solely on SGM women**
 - According to the NIH RCDC Inclusion Statistics Report, only 24% of SGM Research Focused on Women as of 2021
- **Lack of Adequate and Accurate Data Collection on Sexual Orientation, Gender Identity, and Sex Characteristics (SOGISC)**
 - Key to Ensuring Scientific Rigor
- **NIH Sex as a Biological Variable (SABV) Policy**
 - Reinforces Sex as a Binary Construct
- **NIH Inclusion Policy and Reporting**
 - Reinforces Gender as a Binary Construct
- **Experiences of SGM Women in STEM and in the Health Science Workforce**
 - Elevated Marginalization at the Intersection of Gender and SGM status

Opportunities

- **Increasing Precision in Language Related to Sex and Gender**
 - More Nuanced Language Supports Scientific Rigor (e.g., Sex Characteristics)
- **Expanding SOGISC Data Collection**
 - Efforts to Expand Measurement Research
 - Enhanced Data Collection, Analysis, and Reporting in Human Studies
 - Data Collection with the Health Research Workforce
 - HHS SOGI Data Action Plan
- **Fostering Inclusion in Research and Workforce**
 - Recruitment and Retention in Research Studies and the Workforce to Increase Scientific Rigor
 - Centering Research Questions Around the Health Needs of SGM Women



Connect with Us



Office E-mail:
SGMRO@nih.gov

Karen Parker, PhD, MSW
karen.parker@nih.gov

Website:
<https://dpcpsi.nih.gov/sgmro>

Sign-up for NIH SGM Listserv:
<https://tinyurl.com/NIHSGMLIST>

Sign-up for SGM Health SIG Listserv:
<https://tinyurl.com/SGMHSIG>